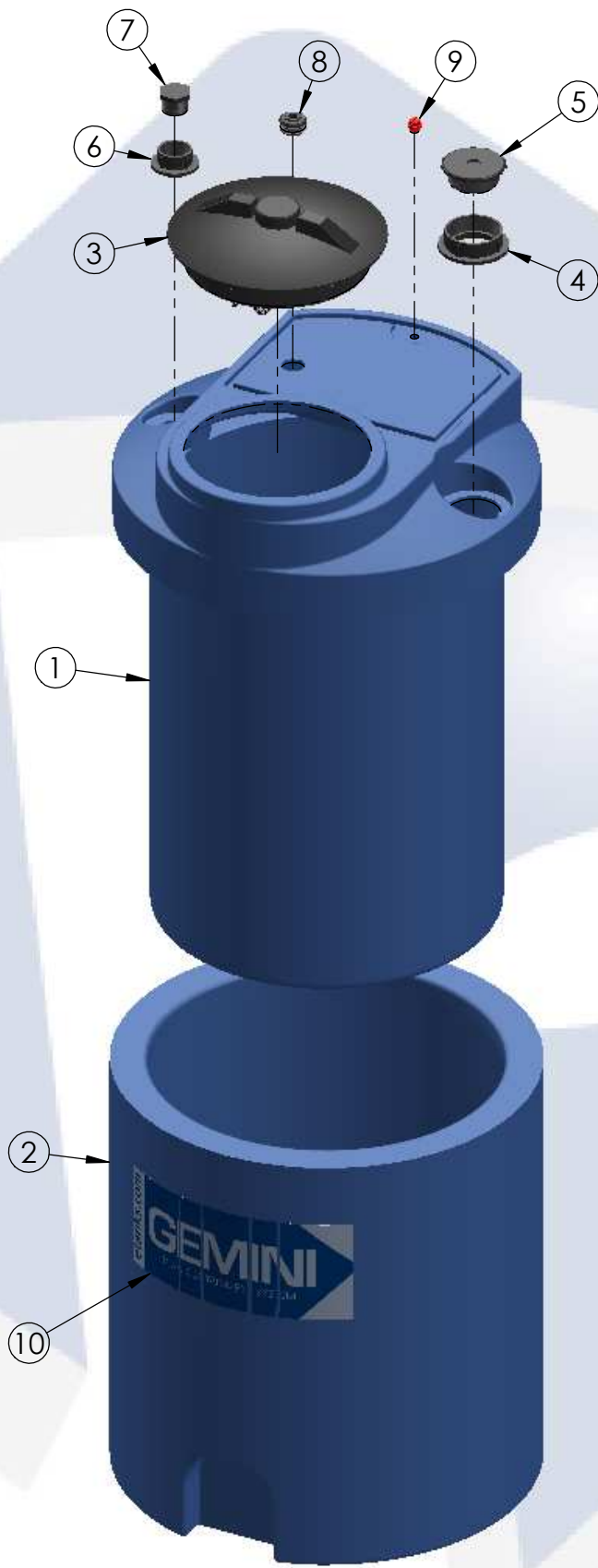




**ISO VIEW  
(ASSEMBLED)**



**TRIMETRIC VIEW  
(EXPLODED)**

15 GALLON GEMINI	PART NUMBER	
	BLUE	NATURAL
STANDARD (1.5 SPG)	01-28907	01-28906
HD (1.9 SPG)	01-29772	01-29763

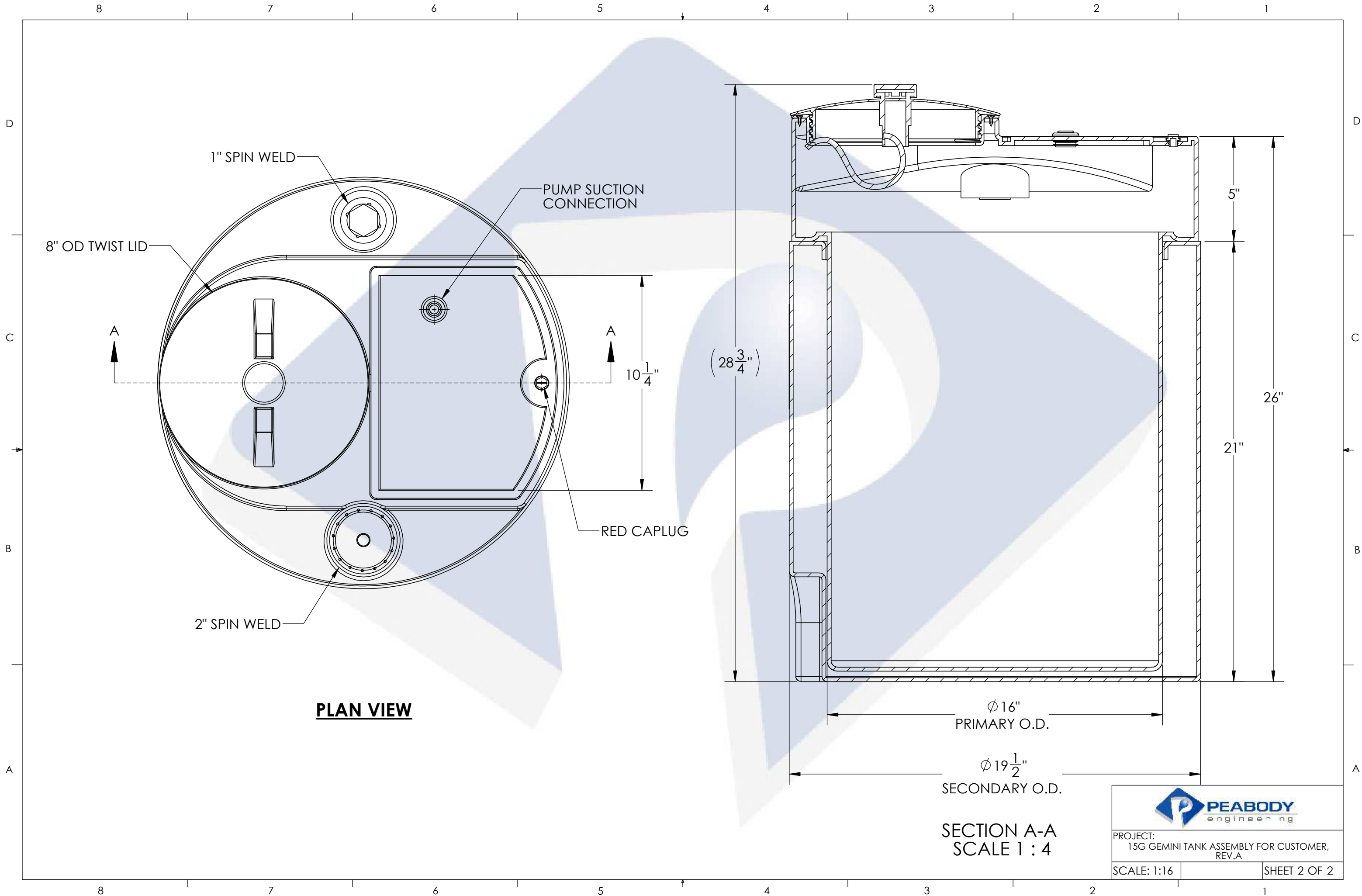
ITEM NO.	DESCRIPTION	QTY.
1	15G GEMINI PRIMARY TANK	1
2	15G GEMINI SECONDARY TANK	1
3	8" TWIST LID ASSEMBLY	1
4	2" FNPT SPIN WELD FITTING, PE	1
5	2" THREADED PLUG, PE	1
6	1" FNPT SPIN WELD FITTING, PE	1
7	1" THREADED PLUG, PE	1
8	1 1/4" CAPLUG / GROMMET SUB-ASSY	1
9	RED CAPLUG / O-RING SUB-ASSY	1
10	MOLD IN GRAPHIC	1

**NOTES:**

- CAPACITY: 15 GAL. NOMINAL
- APPROXIMATE WEIGHT: 25 LBS
- TANK MATERIAL: LLDPE W/ UV INHIBITOR
- SERVICE PRESSURE: ATMOSPHERIC

**PROPRIETARY AND CONFIDENTIAL**  
THE INFORMATION CONTAINED IN THIS DRAWING IS THE SOLE PROPERTY OF PEABODY ENGINEERING. ANY REPRODUCTION IN PART OR AS A WHOLE WITHOUT THE WRITTEN PERMISSION OF PEABODY ENGINEERING IS PROHIBITED.

UNLESS OTHERWISE SPECIFIED:		NAME	DATE	
DIMENSIONS ARE IN INCHES TOLERANCES: ±1/4" ANGULAR: ± .5° ONE PLACE DECIMAL: ± .25 TWO PLACE DECIMAL: ± .125 THREE PLACE DECIMAL: ± .063	DRAWN	MSM	11/25/13	
TANK MATERIAL: LLDPE	CHECKED			PROJECT: <b>15 GALLON GEMINI TANK ASSEMBLY</b>
INNER TANK S/N:	ENG APPR.			CUSTOMER: <b>PEABODY STANDARD</b>
OUTER TANK S/N:	MFG APPR.			SITE/LOCATION: -
CUSTOMER PO#	Q.A.			DRAWING#: <b>SEE TABLE</b>
DO NOT SCALE DRAWING	<b>ALTERNATIVE VERSIONS</b>			SIZE: <b>B</b> DESC.: <b>PEABODY 15 GALLON GEMINI</b> REV.: <b>A</b>
	MATERIALS: XLPE, PPL, PVDF COLORS: NATURAL, BLUE OR BLACK AVAILABLE WITH FRP WRAP			SCALE: 1:16    SHEET 1 OF 2
	CALL FOR PART NUMBERS			



**PLAN VIEW**

$\phi 16''$   
 PRIMARY O.D.  
 $\phi 19\frac{1}{2}''$   
 SECONDARY O.D.

**SECTION A-A  
SCALE 1 : 4**

	
PROJECT: 15G GEMINI TANK ASSEMBLY FOR CUSTOMER, REV.A	
SCALE: 1:16	SHEET 2 OF 2